

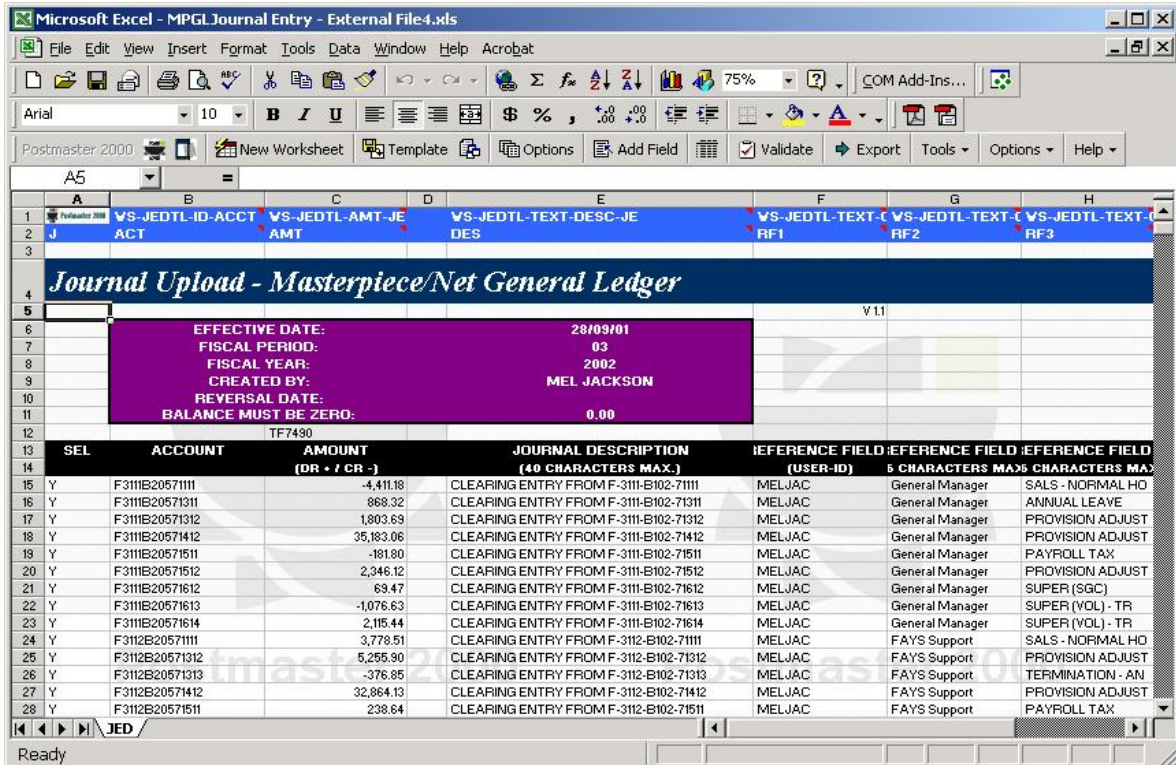
Postmaster 2000 is the ultimate tool for generating Infor FMS 3.0/4.0, SSAGT FM2.0 / Masterpiece External Feeds !

- 1. Create intelligent Excel feed worksheets to enter feed information**
- 2. Postmaster converts into external feed files**
- 3. Postmaster can then FTP these files to your FM2.0 / Masterpiece system**

For more information contact :

Solvent Green Software
 Ph: + 61 2 9412 4212
 Fax: + 61 2 9412 2212

Email:
Postmaster2000@solventgreen.com



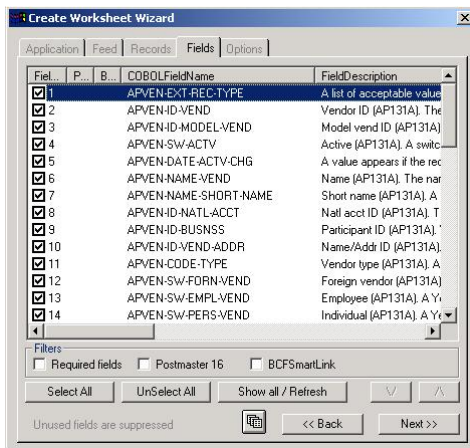
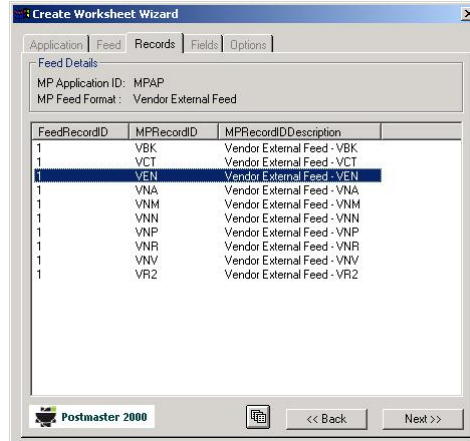
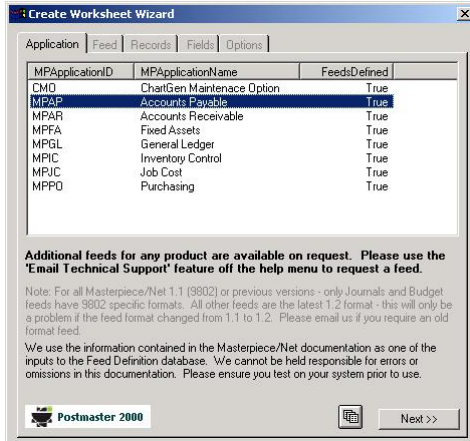
You can use Postmaster to generate :

- **Journals**
- **Vendors**
- **Budgets**
- **Assets**
- **And more !**

Version 4 now supports Infor FMS 3.0/4.0, SSA FM2.0 and defining your own feeds using the new custom feed database !!!

SSAGT FM2.0 was formerly known as Masterpiece/Net Financials

New, revolutionary feed generation engine

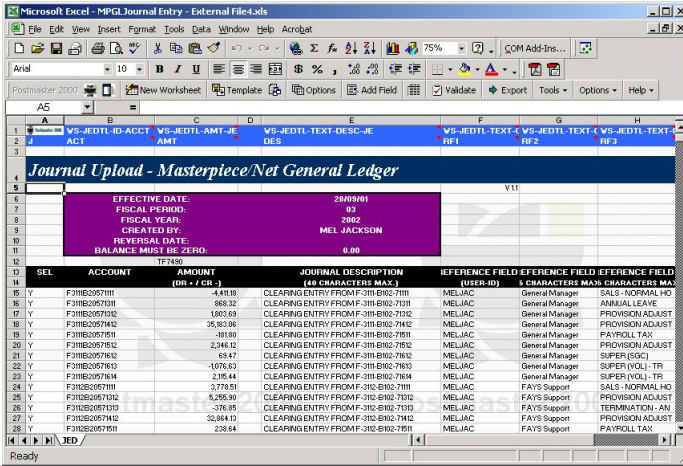


Feeds defined include :

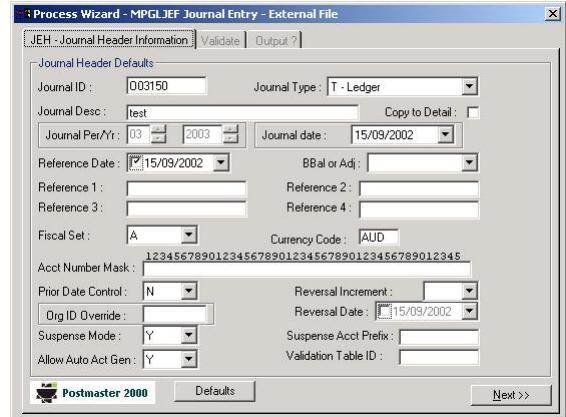
- **MPGL – All Feeds (inc. Allocations, VRW etc.)**
- **MPFA – All Feeds (Assets etc)**
- **MPAP – All feeds (Vendors, vouchers etc)**
- **MPAR – All feeds (Customers, invoices etc)**
- **MPJC – All feeds, MPIC – All Feeds**
- **MPPO – All Feeds(Purchase orders etc)**
- **MPIC - All Feeds**
- **Need other non-MP feeds defined ? (e.g. Payroll) Postmaster 2000 can do that as well !**
- **‘Reverse Engineer’ existing External Feed files into Postmaster 2000 Worksheets !**

Here's how to process a Journal

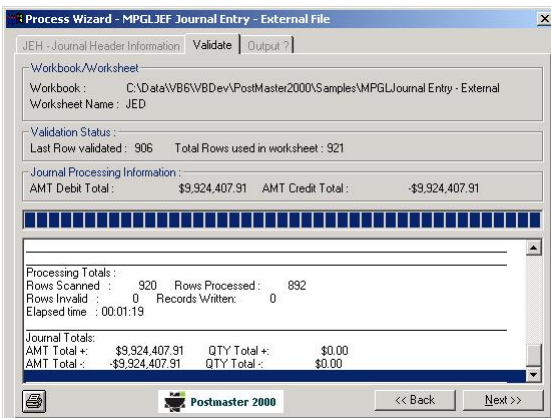
1. Input the data into Excel



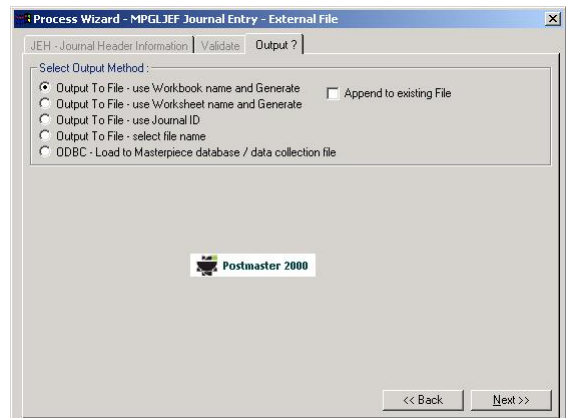
2. Start the Process Wizard and enter defaults



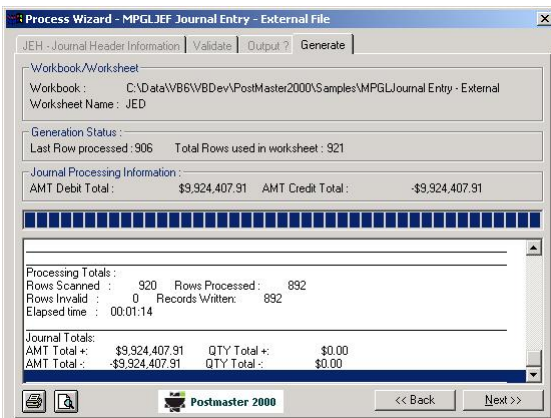
3. Validate the worksheet



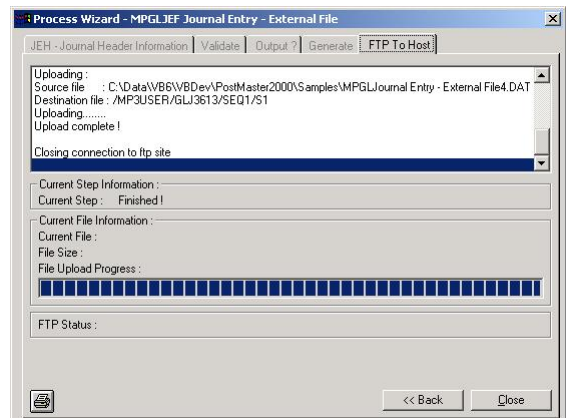
4. Select the output file



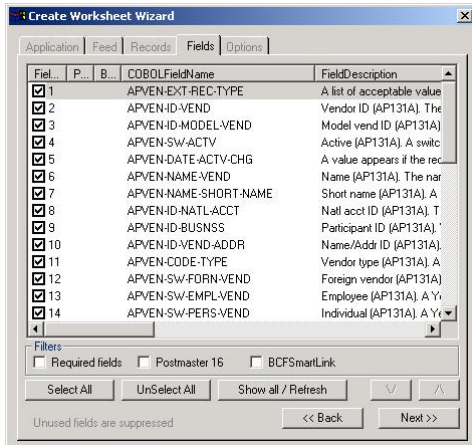
5. Generate the external feed



6. FTP the External Feed file your Host system of any platform !.

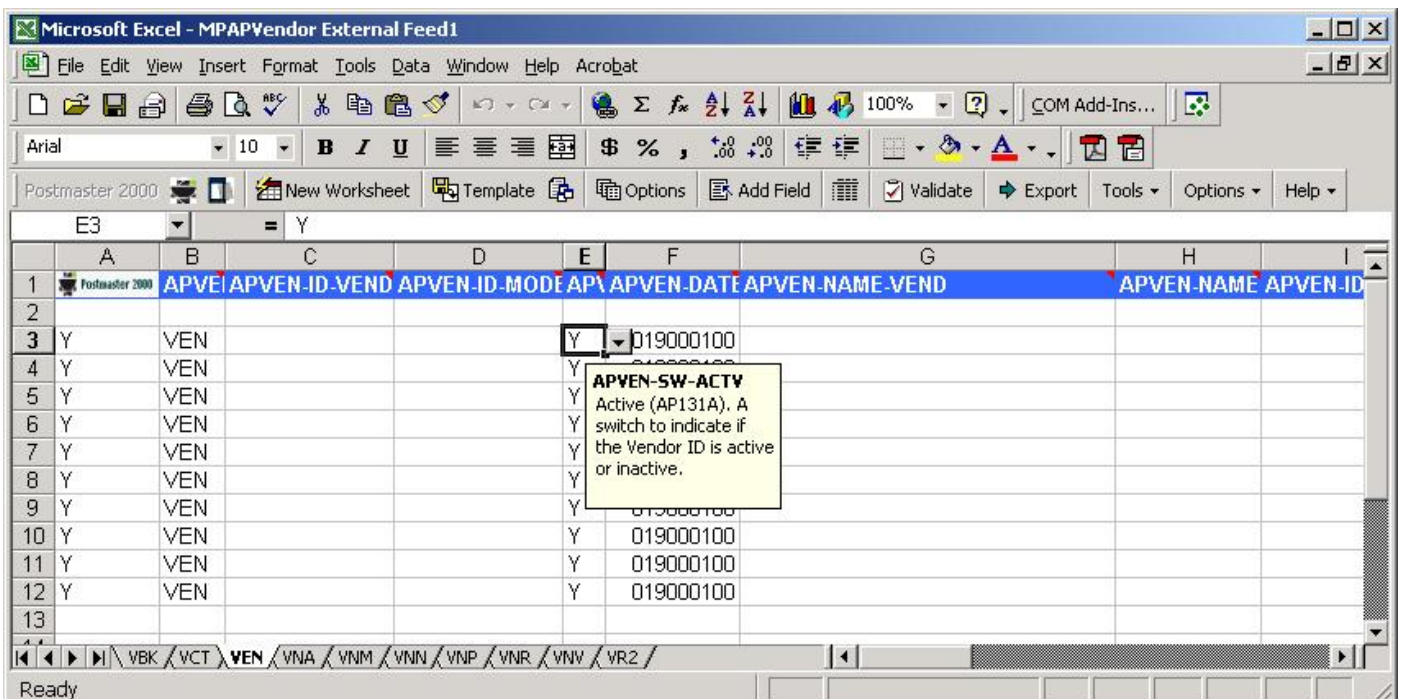


Create a worksheet with only the fields you need !

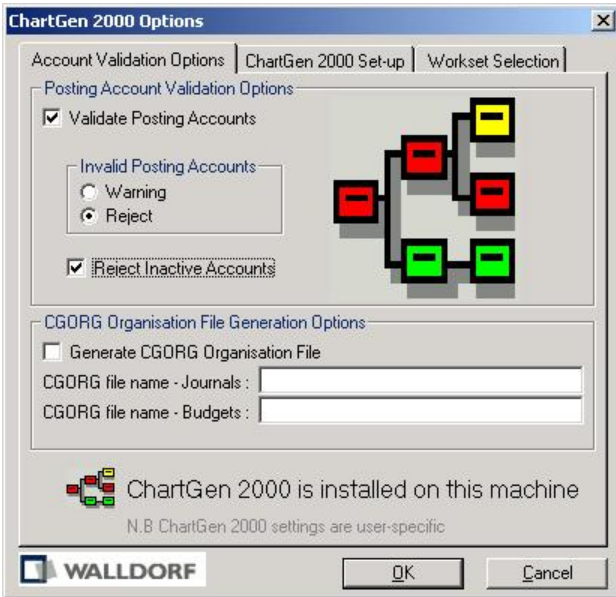


Postmaster 2000 spreadsheets have powerful built-in validation & help ! :

- Field help on every field in the spreadsheet
- Drop down lists
- Default Values
- Length validation
- Chartgen 2000 posting account validation
- User definable field validation against Access or ODBC

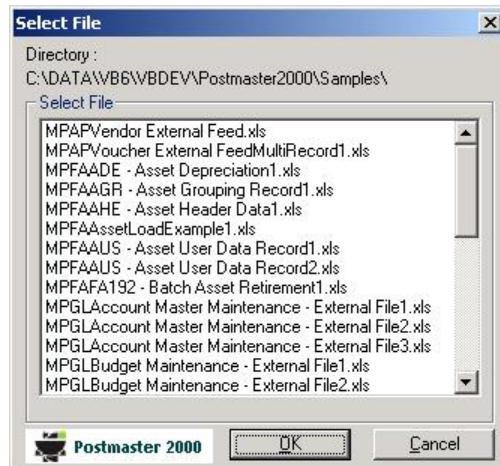


Validate account numbers in all feeds against WTG/MHI's ChartGen 2000 APT Tool



Now includes APT-Load module to load your ChartGen 2000 APTs directly into Masterpiece using ODBC !!!!

Pre-defined templates for all feeds

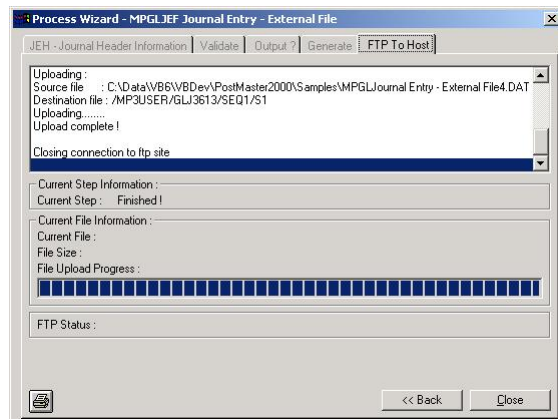
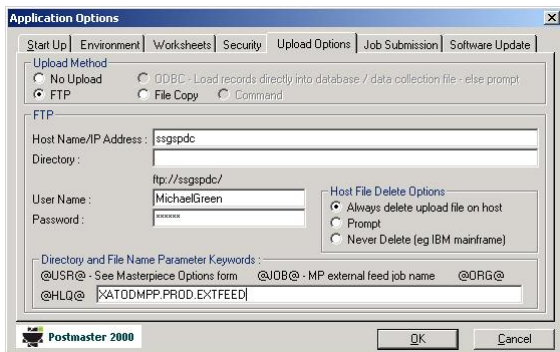


Plus plenty of sample worksheets for all feeds !

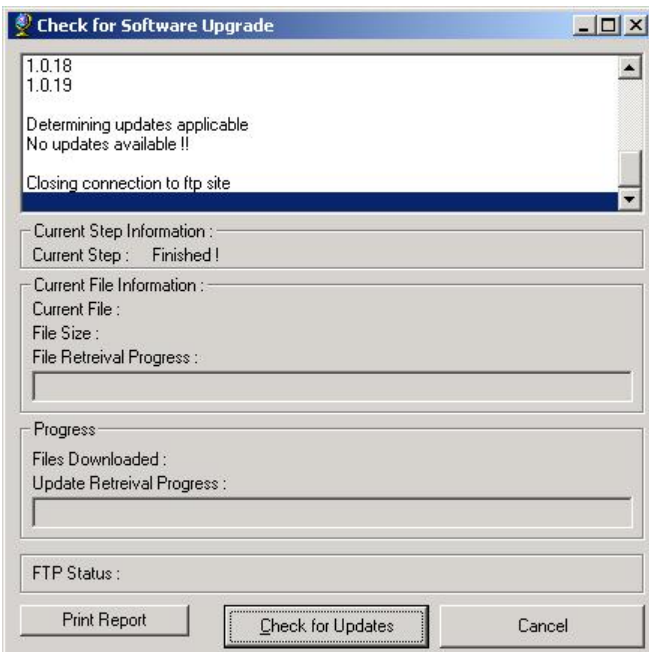
New Postmaster 2000 has a huge number of new features from previous versions :

- **Infor FMS 3.0/4.0, SSAGT FM2.0 Compatible**
- **Masterpiece/Net 1.21 and 1.3 compatible**
- **New, revolutionary feed engine allows Postmaster to produce any feed**
- **All Infor FM3.0/4.0, SSAGT FM2.0 / Masterpiece external feeds defined**
- **Supports Excel 2000 or later**
- **Supports Win 2000, XP, Vista, Win 7**
- **Fast 32-bit processing**
- **Runs within Excel and uses all of Excels features**
- **Postmaster 2000 spreadsheets have powerful built-in validation & help !**
- **Automatic FTP upload to Masterpiece**
- **Automatic internet software updating**
- **‘Reverse Engineer’ existing feed files into Postmaster 2000 worksheets**

Automatic FTP Upload of files



Automatic internet software updating



New feeds and program features are automatically downloaded using this feature !

A product with a long and strong history implementing and supporting Infor FMS 3.0/4.0, SSAGT FM2.0 / Masterpiece users world-wide

- **MHI Postmaster first developed in 1995**
- **Used extensively by Masterpiece sites world-wide**
- **Over 50 licensed departmental users in one of the world's largest Masterpiece sites – the South Australian government**
- **Myers Holum International (MHI) (sister company to Walldorf Technology) is the largest worldwide organization specialising in Masterpiece/Net – with offices in New York & San Francisco.**
- **Solvent Green Software (SGS) 's chief developer used to work for MHI and WTG and originally built Postmaster 2000 for Walldorf Technology Asia Pacific**

Postmaster 2000 V4 Pricing !!!!!

SINGLE USER	MULTI USER 2-5	MULTI USER 6-10	MULTI USER 11+
\$2,000 AUD	\$5,000 AUD	\$10,000 AUD	\$15,000 AUD

½ DAY INSTALL + ½ DAY TRAINING \$ 1,000.00 *

Additional licenses/license upgrades

SINGLE USER - ADDITIONAL	\$ 2,000 AUD
UPGRADE SINGLE USER TO 2-5 USER	\$ 3,500 AUD
UPGRADE 2-5 USER TO 6-10 USER	\$ 6,000 AUD
UPGRADE 6-10 USER TO 11+ USER	\$ 7,000 AUD

- Prices are exclusive of GST/VAT.
- Excel 2000 or later is required.
- On-site installation is also available at standard consulting rates plus expenses.
- Training is also available at standard consulting rates plus expenses (*).
- Consultant travel expenses are not included in any pricing
- License is per installed PC. A license must be purchased for each PC.
- Site license pricing on application.

Free 5 or 30 day trial !

Download your free trial version from :

<http://www.solventgreen.com>

For a 30-day trial you must contact us prior to installation

For more details email :

Postmaster2000@solventgreen.com or call

+ 61 2 9412 4212